

ACHIEVING MORE  
**TOGETHER**



# Ningbo Longwell Electric Technology CO.,LTD

Established 1990

# Company Introduction

## 关于我们 | About Us

LONGWELL is a manufacturer of HVAC fans, blowers, motors and components, such as centrifugal fans, axial fans, cross flow fans, single/double forward curved fans, AC/BLDC/ECM motors as well as industrial fan blowers, established in 1990, equipped with high advanced testing and production facilities, automatic welding machines, CNC machining centers, injection machines. With over than 28 years manufacturing experiences, LONGWELL is very skilled in designing, developing and manufacturing, and exporting to over 30 countries including many Fortune Global 500 customers in HVACR application. and products passed CCC, CE, ETL and UL.

LONGWELL EMC Technology is giving more energy saving to our world.

the advantages are:

- Our ECM motorized fans' efficiency are 30%-60% higher than the traditional motors;
- The build-in PCBA achieved stepless speed control, and communication with customers products;
- longer life span up to 500,000 hours;
- IP44, 45, 55, IP68, can be customized;
- Sine wave, three phase eliminate electromagnetic-acoustic and lots of other protection functions like soft start, overload, motor block ...



Welcome more customers from all walks of life to contact us for future business relationships mutual success. Our joint venture will benefit both our parties. We supply the best products at the best prices to ensure our customers have everything they need to fit their budget, grow environment and personal style.

# Values

Our culture and service are defined by our global values

## VISION

TO BE BEST HVACR PRODUCTS PROVIDER IN THE MARKET

## MISSION

- JOINTLY CREATE WEALTH
- ACHIEVE THE GREATEST VALUE OF EMPLOYEES
- PUBLIC WELFARE SOCIETY

## VALUE

CUSTOMER FIRST

OPEN   HONEST   PRAGMATIC   INNOVATIVE   RESULTS ORIENTED





**200+**  
Employees

**2+**  
Overseas offices

**50+**  
Countries

**260+**  
Million annual revenue





## 战略合作伙伴 | Partners







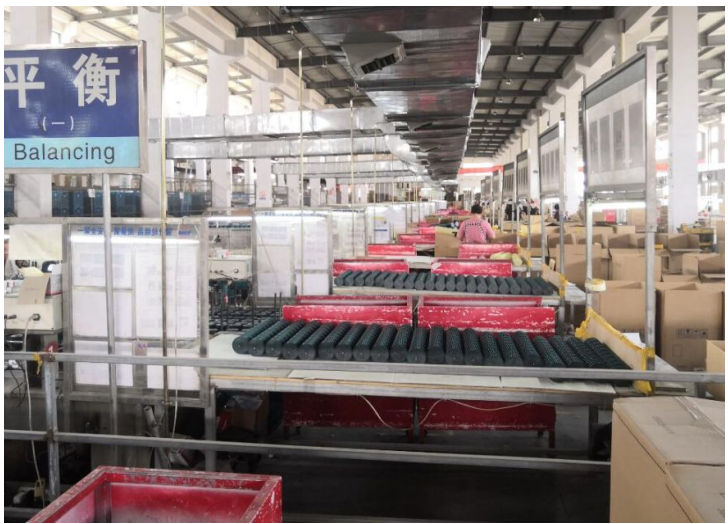














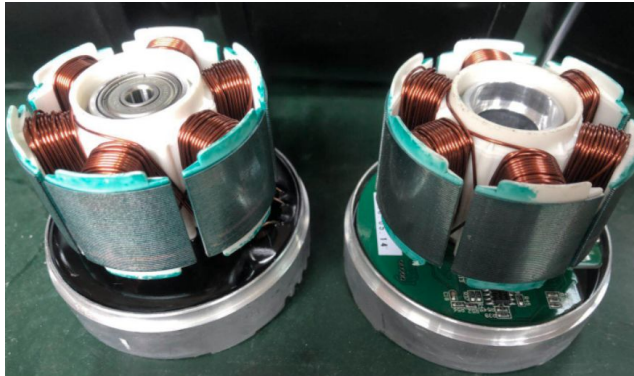
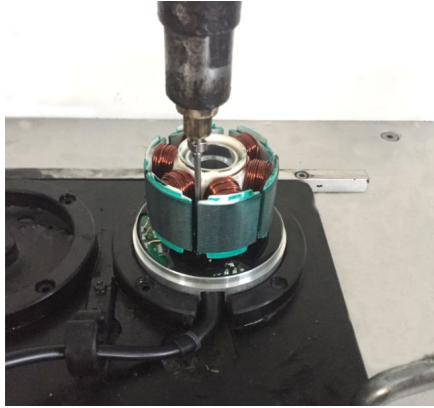
## 设备 | Equipments



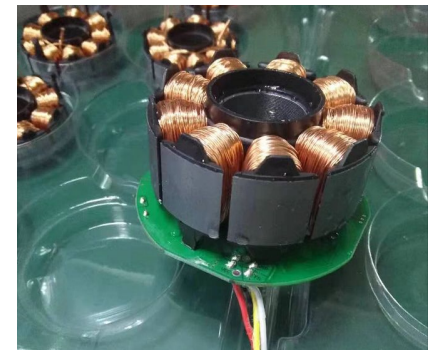
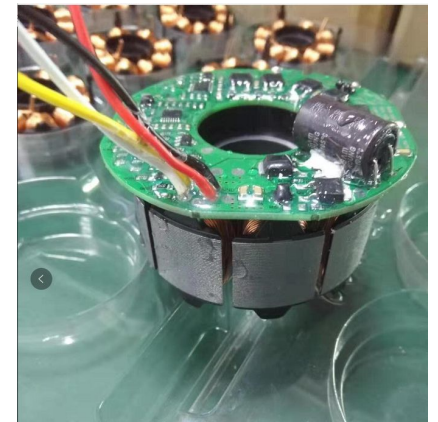
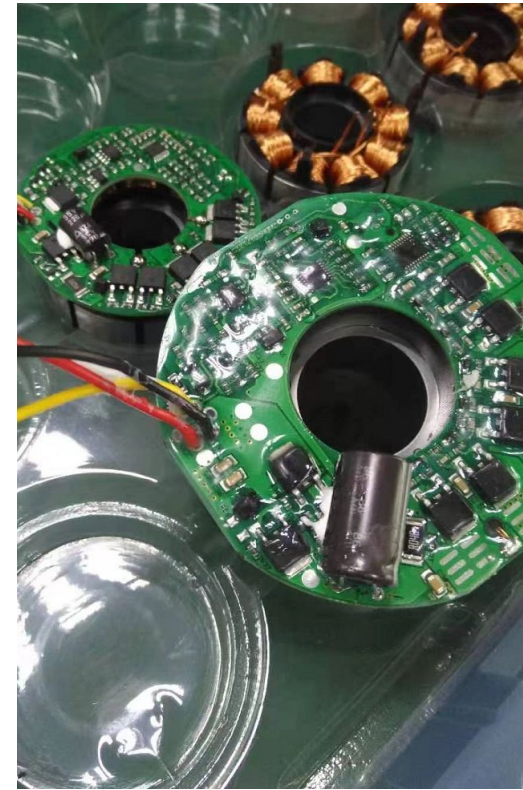


# Electric - Board protection Technology

## Plastic Sealing Technology



## Vacuum Coating Technology



# Centrifugal Fans

- ✓ **100% Replacement** for **Ebm-papst & ZIEHL-ABEGG**
- ✓ Lead time short to **19 Days**
- ✓ Competitive Price



<b>Norminal Voltage :</b>	<b>AC ( 120V / 230V / 380V-400V ) , BLEC (115V,230V,400V) , BLDC (24V/48V/310V)</b>
<b>Materials :</b>	Plastic +GF , Galvanized Metal ,Aluminum Alloy
<b>Norminal Diameters Ranges :</b>	133,175,190,220,225,250,280,310,355,400,450,500,560,630mm
<b>Power Input Ranges :</b>	From 30W to 4.0 KW
<b>Protection Class :</b>	IP44,IP54,IP55
<b>Air Flow Ranges :</b>	<b>260 m³/h - 25,000 m³/h</b>
<b>Air Pressure Ranges :</b>	<b>Up to 1900 Pa ( static Pressure )</b>
<b>Speed Control System :</b>	0-10V / PWM 、 MODBUS RTU 485
<b>Mix.amb.Temperature :</b>	- 25°C to +60 °C
<b>Life-span :</b>	40,000Hours(L10), At 40°C room, humidity 15%~65%RH.
<b>Main Applications :</b>	EC fan array / Electronic cabinet cooling/ Clean room modules/ Heat exchangers/ Air filtration systems / Military HRAC / Pharmaceutical / Biological control systems / Computer room air conditioning (CRAC) systems /Air-handling units
<b>Electronic Protections :</b>	- Soft Start ; - Locked-rotor Protection ; -Tach output; -Reverse Polatity ( EC Motor Type )





## AC / EC Fans Without Brackets

### Plastic

133mm - 250mm ;

30 - 840 W ;

260 - 2950 m³/h ;

430 - 1500 Pa ;



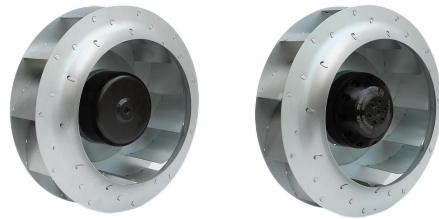
### Galvanized Metal

250mm - 400mm ;

245 - 1150 W ;

Up to 4150 m³/h ;

620 - 1300 Pa ;



### Aluminum Alloy

310mm - 630mm ;

250 - 5500 W ;

Up to 21300 m³/h ;

Up to 1900 Pa ;



## EC Plug Fans



High Static & Powerful Input Power - 100% Replacement of EBM-Papst / Ziehl- ABEGG / Rosenberg

Delivery time short to 19 Days

EMC Motorized

High Efficiency up to 93%

0-10v / PWM speed control

Modbus 485 Internet Protocol



#### AC Forward Centrifugal Fan - Single Inlet

<b>Diameter :</b>	108 /120 /133 /150 /160 /180 /200/200 / 225/250/280/315mm
<b>Materials :</b>	Galvanized Metal Sheet
<b>Operating Voltage :</b>	AC 115V / 230V /400V~ 50-60Hz
<b>Motor Type :</b>	AC External Rotor Motor
<b>Motor Power :</b>	26 - 2200 W
<b>Air Volume :</b>	<b>110 - 5000 m³/h5</b>
<b>Fan Speed :</b>	1350 - 2600 RPM



#### AC / DC / EC Forward Centrifugal Fan - Double Inlet

<b>Diameter :</b>	120/ <b>133/146</b> /160/180/200/225/250/280/300/355 mm,
<b>Materi:</b>	Galvanized Metal Sheet / Plastic +GF
<b>Operating Voltage :</b>	AC 115 / 230 /400V, DC 24/48/310V~ 50-60Hz
<b>Motor Type :</b>	AC External Rotor Motor / BLEC Motor
<b>Motor Power :</b>	70 - 1800 W
<b>Air Volume :</b>	<b>510 - 8000 m³/h</b>
<b>Static Pressure :</b>	900 - 2100 RPM



## Commercial usage centrifugal Fans for Air-conditioning system

Longwell Commercial usage centrifugal air-conditioning fans are based on the newly developed and manufactured products with internationally advanced technology of similar products;

With volume ranging from 500 ~ 100,000 m/h ;

Air Pressure Ranging from 850 - 3000 Pa ;

Driven by direct-driven motor (single phase) and belt driven motor, with low noise,easy speed control and compact construction ;

It's the ideal subsidiary equipment for airflow changeable air conditioner, tube type units,VAV system, heating and ventilation air conditioners, and cleaning equipment.



120mm - 1500mm length available

## DC Cross Flow Fan

super quite/long life span 40,000h  
step-less speed control (PWM/0-10V)  
three phase motor(12V 24V 48V input)

[View more](#)



Cross Flow Fan

## Cross Flow Fan / Tangential Fans

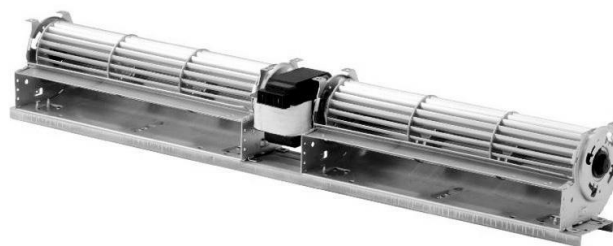
<b>Norminal Voltage :</b>	<b>AC (115V,230V) DC (24V/48V/310V) EC (115V/230V)</b>
<b>Materials :</b>	Aluminum Alloy
<b>Norminal Diameters Ranges :</b>	25,30,40,43,45,50,60,65,80,90,100,110,120,150,180,200 mm - Diameter of Rotor
<b>Power Input Ranges :</b>	From 8W to 700W
<b>Protection Class :</b>	IP44,IP54, IP55( OEM)
<b>Air Flow Ranges :</b>	<b>22 m³/h - 5,000 m³/h</b>
<b>Fan Speeds :</b>	0- 3600 RPM - 1-3 Speeds or Stepless Motor Speed
<b>Speed Control System :</b>	0-10V / PWM
<b>Mix.amb.Temperature :</b>	- 25°C to +60 °C
<b>Life-span :</b>	30,000Hours(L10), At 40°C room, humidity 15%~65%RH.
<b>Main Applications :</b>	<b>Heating Convectors</b> / Server Cooling & Ventilation / Grow Tent / <b>Floor Heating</b> / Car Electronics Medical equipments / 3D Printer / <b>Air Curtain</b> / Elevator Ventilation / Equipments Cooling / Refrigerator ,etc
<b>Electronic Protections :</b>	- Soft Start ; - Locked-rotor Protection ; -Tach output;





#### AC cross Flow Fan Blower

<b>Diameter :</b>	25,30,40,43,45,50,60,65mm
<b>Voltage :</b>	AC 115V / 230V
<b>Motor :</b>	Shaded Pole Motor ;
<b>Speed :</b>	Up to 2700 RPM



#### Double Type -Cross Flow Fan Blower

<b>Diameter :</b>	230,40,43,45,50,60,65mm ( Double Blower )
<b>Voltage :</b>	AC 115V / 230V
<b>Motor :</b>	Shaded Pole Motor ;
<b>Speed :</b>	Up to 2600 RPM



#### BLDC Cross Flow Fan / Tangential Fans

<b>Diameter :</b>	230,40,43,45,50,60,65mm ( Double Blower )
<b>Voltage :</b>	AC 115V / 230V
<b>Motor :</b>	Shaded Pole Motor ;
<b>Speed :</b>	Up to 2600 RPM



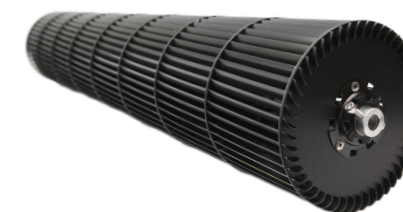
#### Cross Flow Fans - Air Curtain / Ventilation / Cooling

<b>Diameter :</b>	80,90,100,120,150mm
<b>Voltage :</b>	AC 115V / 230V
<b>Motor :</b>	AC Capacitor Motor
<b>Speed :</b>	Up to 2700 RPM or OEM



#### Transformer Cooling Fans- Cross flow Type

<b>Voltage :</b>	AC 220V / 400V
<b>Motor :</b>	AC Capacitor Motor
<b>Diameter :</b>	90,100,110,120,150,200,220mm
<b>Speed :</b>	1400 RPM

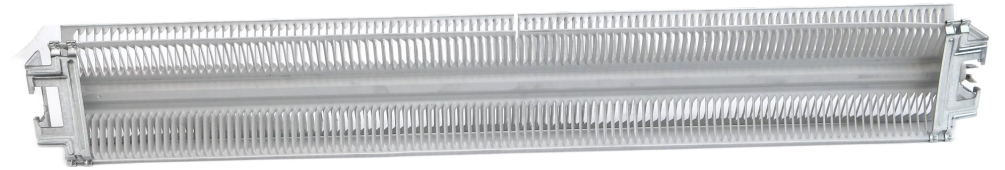
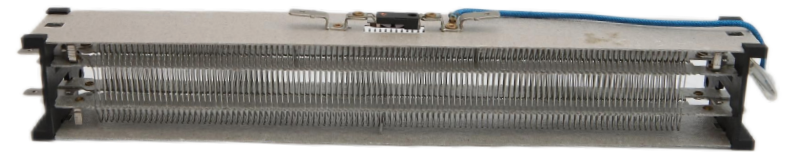


#### Cross Flow Impeller

<b>Material :</b>	Aluminum alloy / ABS + GF
<b>Diameter :</b>	30,40,43,45,50,60,65,90,100,110,120,150,200 mm
<b>Length :</b>	Up to 1200mm or Customized
<b>Hub / Shaft</b>	6mm,8mm,10mm,12mm



**Speed Regulator - Thermostat**



**Heating Elements - Match with Cross flow fan**



**Fan Grid - Match with DC / AC cross flow fan**



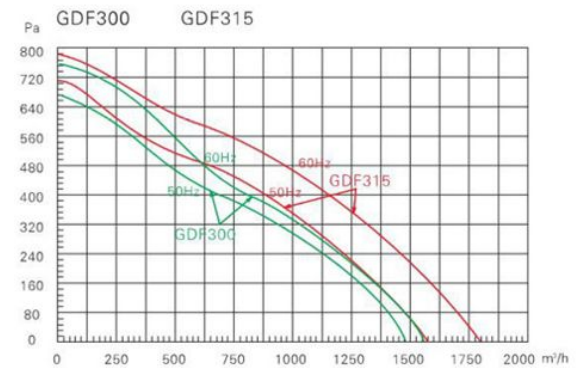
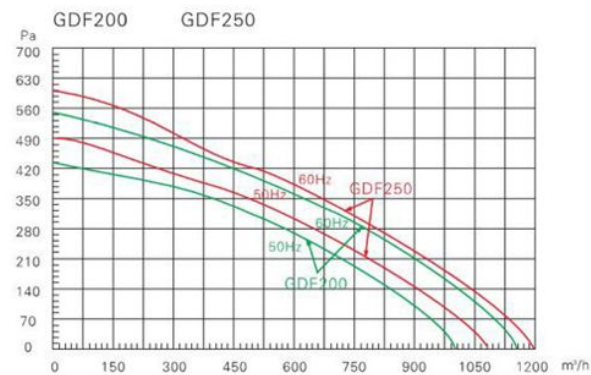
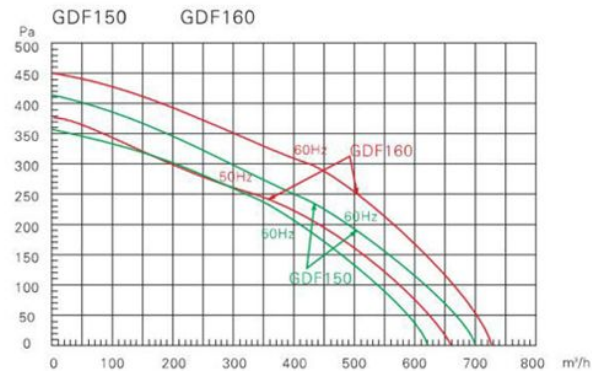
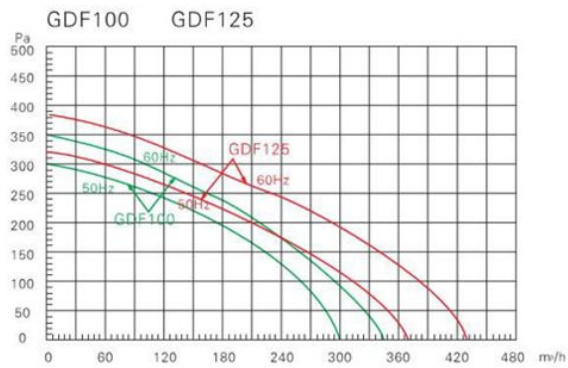
# Inline-Duct-Fans



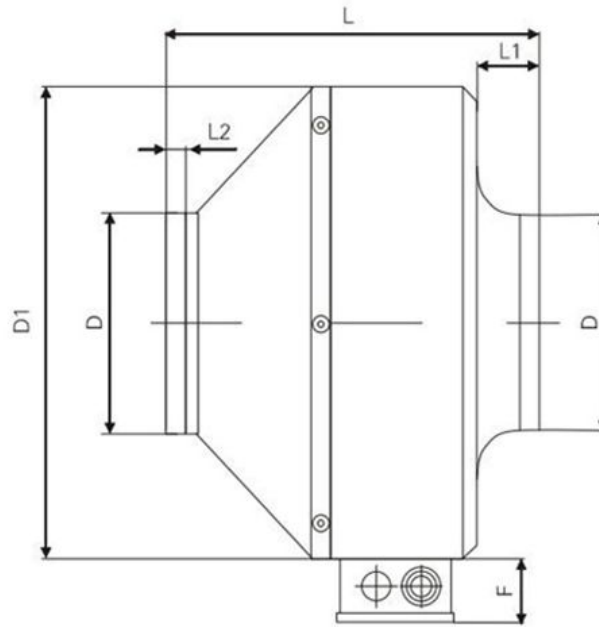


### Metal Type Inline Duct Fans - AC / DC / EC

<b>Diameter ( air inlet out ΦD ) :</b>	4inch ,5inch ,6inch ,8inch ,10inch ,12inch
<b>Operating Voltage :</b>	AC 115V / 230V , DC 24V / 48V ,EC 120V / 220V
<b>Motor Type :</b>	AC Capacitor Motor / BLDC Motor / BLEC Motor
<b>Motor Power :</b>	40W / 75W / 150W / 260W / 320W / OEM
<b>Air Volume :</b>	Up to 2987 m³/h ( 1760 CFM )
<b>Static Pressure :</b>	500 / 520 / 600 / 680 Pa
<b>Noise Level :</b>	50- 72 dBA







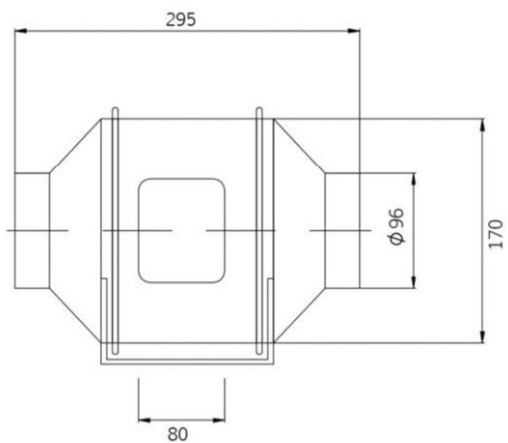
Model	D	D1	L	L1	L2	F
	mm	mm	mm	mm	mm	mm
LWDAMO-100	100	237	204	25	25	42
LWDAMO-125	125	237	193	25	31	42
LWDAMO-150	150	278	195	25	25	42
LWDAMO-160	160	278	195	25	25	42
LWDAMO-200	200	333	210	25	25	42
LWDAMO-250	250	333	210	29	29	42
LWDAMO-300	300	402	270	28	28	42
LWDAMO-315	315	402	265	30	25	42



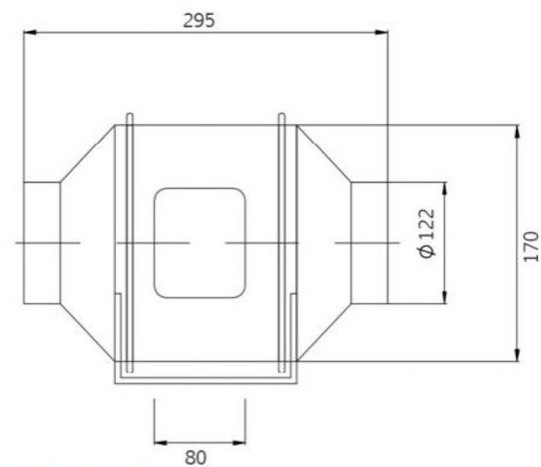
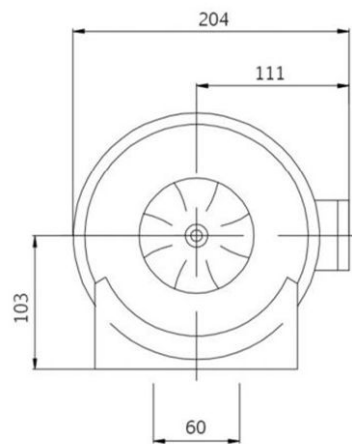
#### Mixed Flow Inline Duct Fans - AC / DC / EC

<b>Diameter ( air inlet out ΦD ) :</b>	100mm,125mm,150mm,200mm
<b>Operating Voltage :</b>	AC 115V / 230V , DC 24V / 48V ,EC 120V / 220V ~ 50-60Hz
<b>Motor Type :</b>	AC Capacitor Motor / BLDC Motor / BLEC Motor
<b>Motor Power :</b>	25W - 182W / OEM
<b>Air Volume :</b>	Up to 1250 m³/h ( 735 CFM )
<b>Static Pressure :</b>	Up to 435 Pa
<b>Noise Level :</b>	24 - 41 dBA

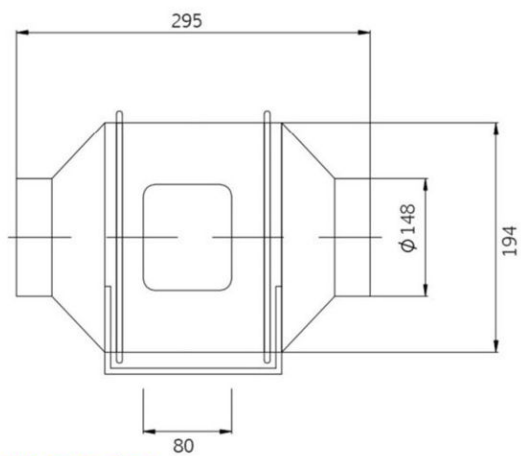
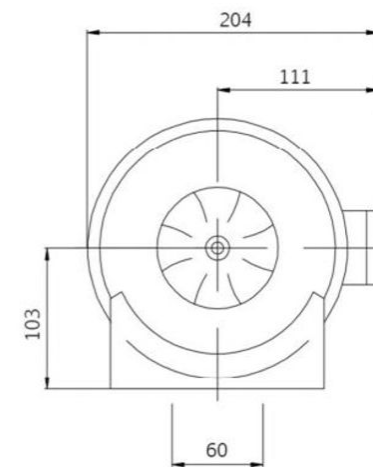




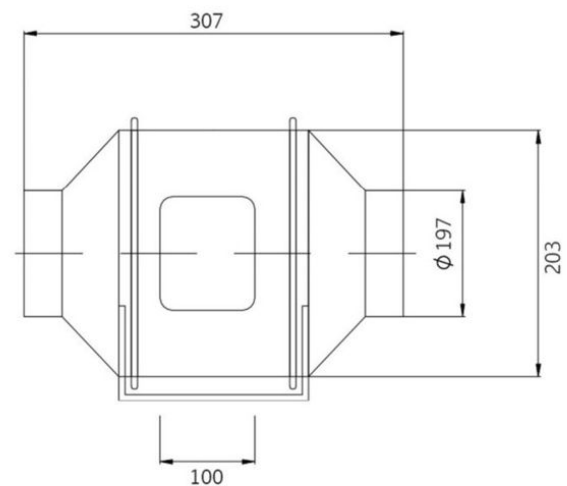
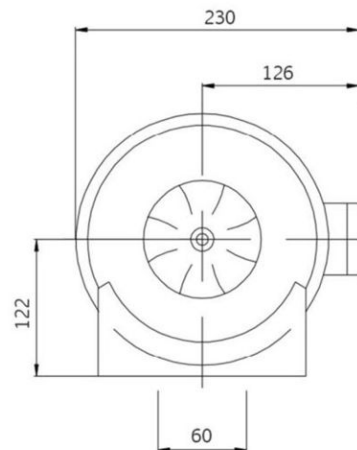
**LWDAPS-100**



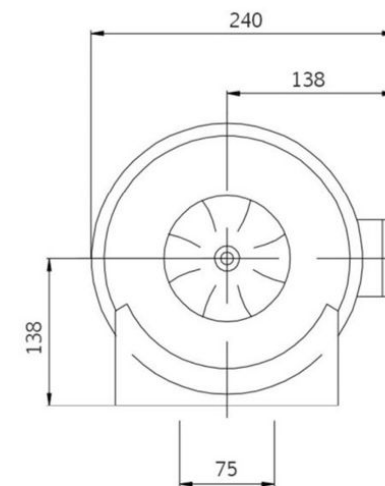
**LWDAPS-125**



**LWDAPS-150**



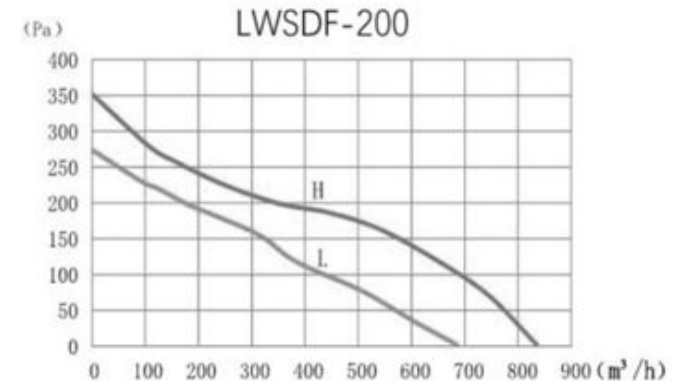
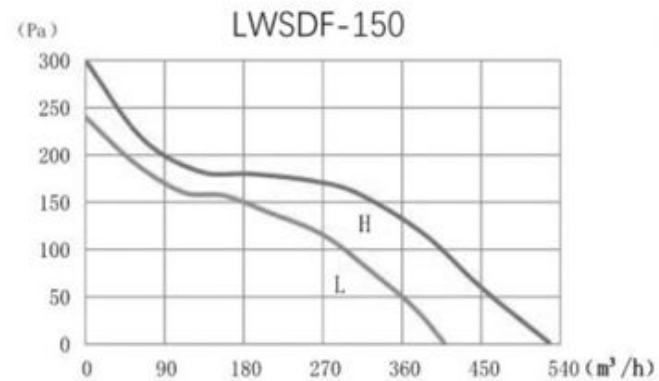
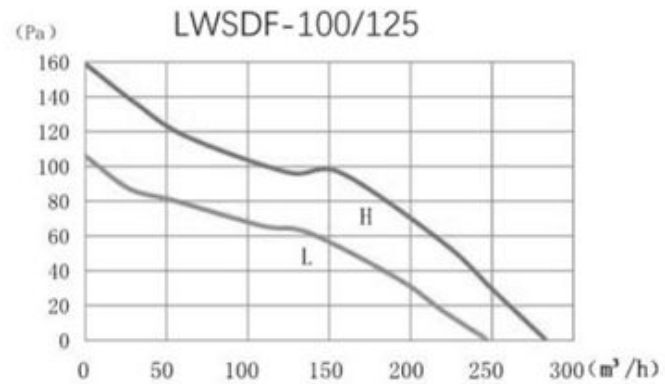
**LWDAPS-200**



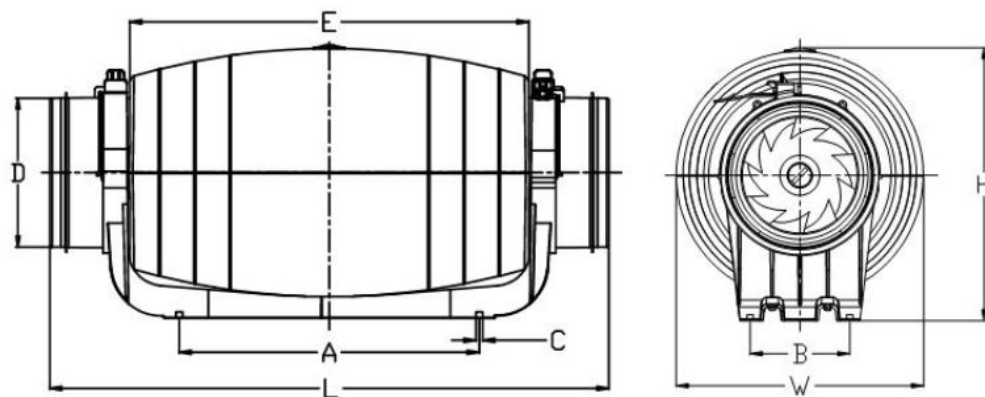


#### Super Silent - Inline Duct Fans - AC / DC / EC

<b>Diameter ( air inlet out ΦD ) :</b>	100mm,125mm,150mm,200mm
<b>Operating Voltage :</b>	AC 115V / 220v, ~50/60Hz
<b>Motor Type :</b>	AC Motor
<b>Motor Power :</b>	28 - 160W / OEM
<b>Air Volume :</b>	Up to 840 m³/h
<b>Static Pressure :</b>	106 - 352 Pa
<b>Noise Level :</b>	22 - 35 dBA







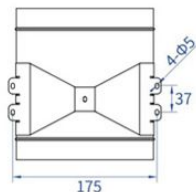
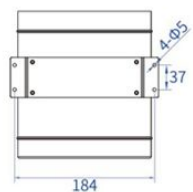
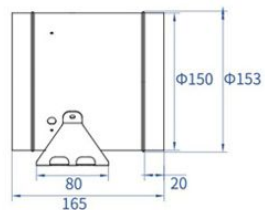
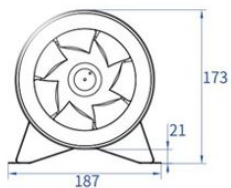
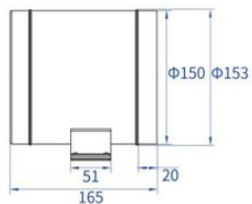
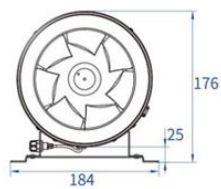
Model	A	B	C	$\varphi D$	E	L	W	H
100	248	82	4- $\varphi 5.5$	97	330	580	205	225
125	248	82	4- $\varphi 5.5$	123	330	462	205	225
150	251	95	4- $\varphi 5.3$	149/158	352	488	221	244
200	339	128	4- $\varphi 5.6$	198	436	567	262	304



#### EC Motor Inline Duct Fans - EC

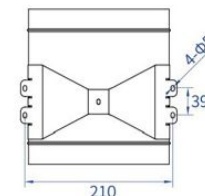
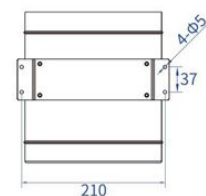
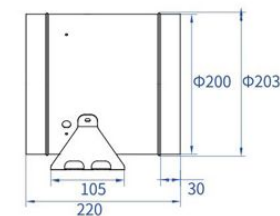
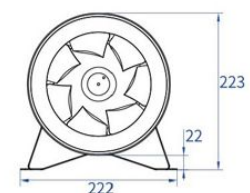
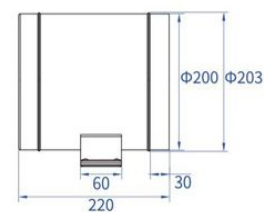
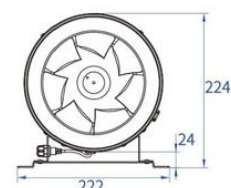
<b>Diameter ( air inlet out ΦD ) :</b>	6 inch/150mm, 8 inch /200mm ,10 inch / 250mm , 12 inch/315mm
<b>Operating Voltage :</b>	110- 120V / 220-240V ~ 50-60Hz
<b>Motor Type :</b>	BLEC Motor - <b>O-10V / PWM Speed control</b> ( Max Speed : 5000 RPM )
<b>Motor Power :</b>	40W / 75W / 150W / 260W / 320W / OEM
<b>Air Volume :</b>	Up to 2987 m³/h ( 1757 CFM ) /
<b>Static Pressure :</b>	500 - 677 Pa
<b>Noise Level :</b>	0 -72 dBA





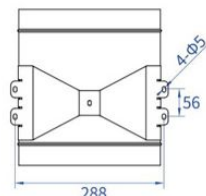
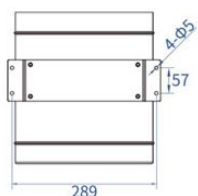
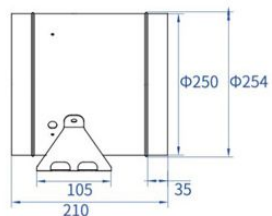
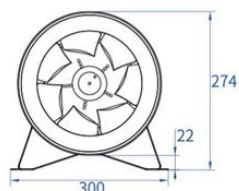
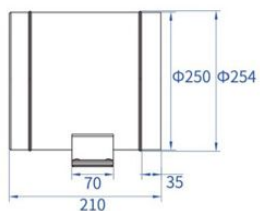
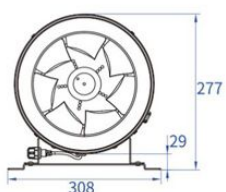
Note : Units = mm,Tolerance  $\pm 2$ mm

LW-A150S



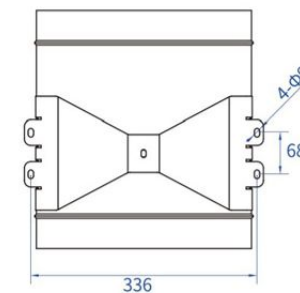
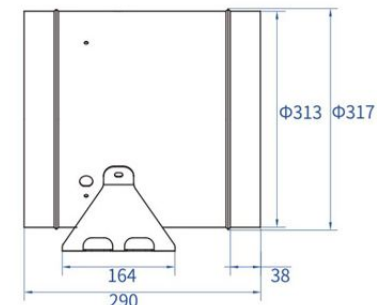
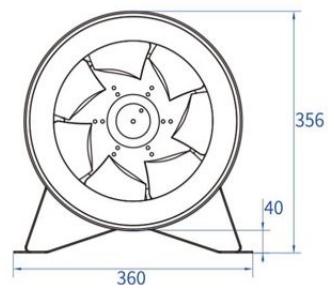
Note : Units = mm,Tolerance  $\pm 2$ mm

LW-A200S



Note : Units = mm,Tolerance  $\pm 2$ mm

LW-A250S

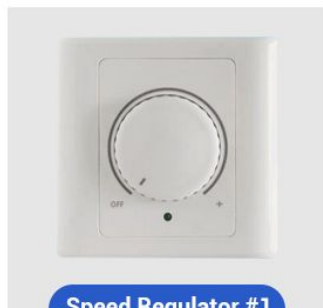


Note : Units = mm,Tolerance  $\pm 2$ mm

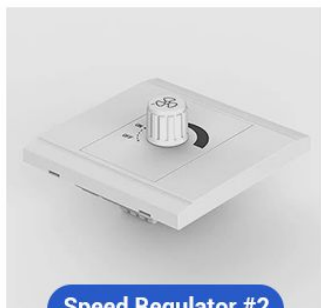
LW-A315Z



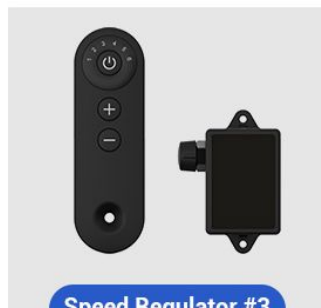
**Activated Carbon Air Filter**



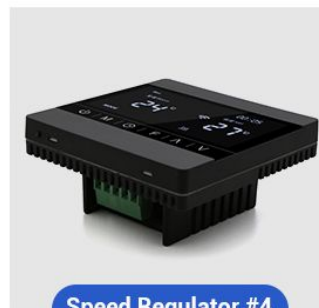
**Speed Regulator #1**



**Speed Regulator #2**



**Speed Regulator #3**



**Speed Regulator #4**

**Speed Regulator**





# Axial-Flow-Fans





AC Axial Flow Fans	
<b>Diameter ( Fan Blades ) :</b>	200mm,250mm,300mm,350mm,400mm,450mm,500mm,560mm,600mm,700mm,800mm,900mm
<b>Operating Voltage :</b>	AC 115V / 230V /400V , BLDC 24V / 48V / 310V ~ 50-60Hz
<b>Motor Type :</b>	AC Motor
<b>Motor Power :</b>	Up to 2600 W
<b>Air Volume :</b>	Up to 30200 m³/h ( 17775 CFM )
<b>Static Pressure :</b>	Up to 425 Pa
<b>Mainly Applications :</b>	Cooling Tower , Ventilation System , Farm / Greenhouse / Building Cooling ,Air Conditioning System , Kitchen Ventilation Bathroom Ventilation , Warehouse Ventilation



#### Portable Ventilator

- 100% Pure Copper Wire Motor;
- Metal Enclosure ,Metal Fan Blades ;
- High Speed with Strong Air Flow ;
- With Front and back grill with handle , easy to moving .



#### Industrial Axial Blower

- 100% Pure Copper Wire Motor;
- Full Metal Body , for industrial usage ;
- Strong Air Flow , Various sizes for choose ;
- Optional for front Grill .



#### Drum Fans

- 100% Pure Copper Wire Motor ,High efficiency ;
- Full Metal Bod and Bracket ;
- 3 pcs Aluminum Alloy Fan Blades ;
- U type base with two wheels .





### Large Air Flow

High-strength stainless steel propeller with advanced fluid design that provides large air flow, low noise, and high efficiency

### High Efficiency

IP55 waterproof and dust-proof protection, F class insulation, ultra-efficient motor with 85% efficiency enables animal producers to save breeding costs and increase profits.

### High Strength

Box housing and venturi nozzle are made of "X" gauge galvanized sheet-steel with 275g/m<sup>2</sup> zinc layer coating, which enables to withstand the harsh environment of the breeding sites.

### Long Durability

Belt drive, adopt imported famous brand belt, made of neoprene composite materials and fiberglass cord core, that provides high strength, good wear resistance, high flexibility and high tensile resistance.

### Widely Application

An ideal choice for ventilation and cooling in animal breeding houses, greenhouses, various warehouses, workshops and more.



**EF Series**



**HPF Series**



**MPF Series**

### EF series - EC Motor

Intelligent variable speed control of EC motor, endows the fan with full protections: such as phase failure, over-voltage, under-voltage, locked-rotor, over-current and temperature protection.

Electric control aluminum alloy shutter, which can be fully opened in all speed range to ensure large air volume and high efficiency.

Support centralized operation control of multiple fans (Optional).

Variable speed can be achieved via 0 ~ 10V / PWM control signal, wide high-efficiency interval to ensure low power consumption.

### HPF Series

Specially designed for high negative pressure breeding environment with long-term bearing capacity of -200Pa operation. It is an ideal choice to provide ventilation supporting for high-rise multistory breeding buildings.

Electric rolling shutter is optional to equip to ensure smooth ventilation during operating and air-tightness after the fan is stopped.

### MPF Series

Adapt to various farm building, especially for the application ranging from -75Pa to -120Pa. It is an ideal choice to provide ventilation supporting for breeding houses equipped with filters or deodorizing systems and high-rise multistory breeding buildings.



### Fast cooling

Being optimized with fluid simulation design, high-strength die-cast aluminum airfoil propeller provides large air flow, which enables fast cooling and quickly air quality improving in cowsheds.

### Low Noise

The smooth propeller shape and high dynamic balance accuracy makes tiny friction coefficient between the blade and air combined with small resonance during running, which ensures low noise and improves the living comfort for the animals.

### Maintenance Free

Direct driving with high transmission efficiency and simple structure, which eliminates the trouble of regular belt replacement and reduces the using cost.

### Power saving

The use of ultra-efficient motor achieves high energy efficiency ratio to reduce power consumption and costs.

### Anti-corrosion

The powder-sprayed steel body and protective mesh, combined with SUS304 stainless steel accessories provide excellent corrosion resistance

### High durability

2.0mm thickness steel fan body with epoxy resin coating, sturdy and durable.



## 交货 | Delivering

Delivery Time ( Samples ): 1- 5 days

Delivery Time ( Bulk Orders ): 20-35 Days

# #1



### Air Shipment

Transportation Time ( Express ) : 5-7 Days

Transportation Time ( DAP To Air Port ) : 3-5 Days



# #2



### Sea Shipment

Transportation Time ( DAP To Sea Port ) : 25- 40 Days





Представительство Ningbo Longwell Electric Technology Co., Ltd. в России ООО “Лонгвелл Рус”

**Адрес:** г. Ижевск, ул. Пушкинская 270 (офис продаж), г. Москва, Новорязанское ш. 6 (склад)

**Тел :** 8 (800) 551-36-84 +7 (495) 414-42-77

**Email :** [info@longwell-rus.ru](mailto:info@longwell-rus.ru)

**Website:** <https://www.longwell-rus.ru>

**Youtube :** [https://www.youtube.com/channel/UCO\\_PJK0SGIf-bt3LcDIUnNA](https://www.youtube.com/channel/UCO_PJK0SGIf-bt3LcDIUnNA)

ACHIEVING MORE  
**TOGETHER**

**Thank you**